

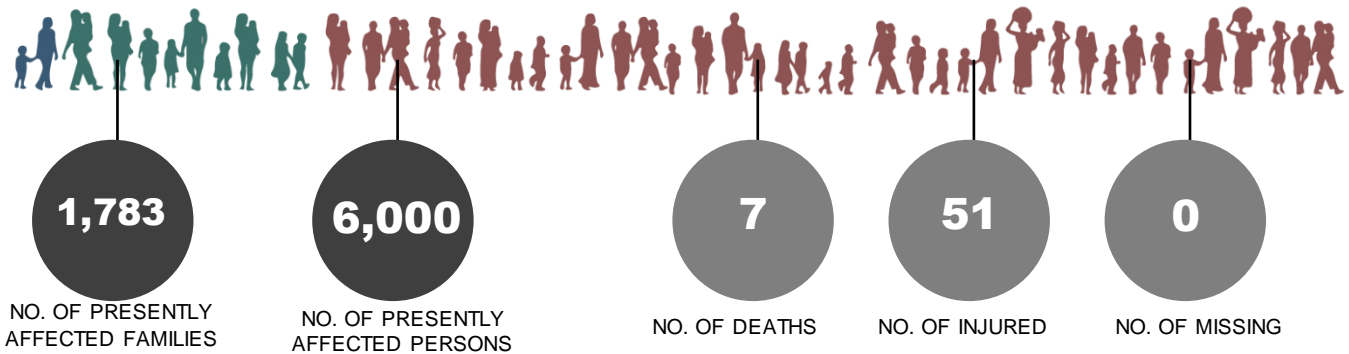
PROTECTION ASSESSMENT AND MONITORING REPORT (IDPPAR)

TYPHOON PAENG

Rempes, Upi, Maguindanao

Reporting Period: 02 November 2022

KEY FIGURES



INCIDENT BACKGROUND

The 16th tropical cyclone for 2022, Tropical Storm Paeng, unleashed torrential rain that triggered floods and landslides in parts of Mindanao. It struck just as we were heading into a long weekend to mark All Saint's and All Soul's day. Damage to the infrastructures, agriculture, business, and lives of at least 67 individuals in Mindanao, particularly in Maguindanao Province, BARMM. The incident caused widespread displacement in Central Mindanao. As of October 30, 2022, Bangsamoro Rapid Emergency Action for Disaster Incidence (READi) reported 582,884 individuals (202,598 households in 389 Barangay) affected by the typhoon. In Upi municipality, one of the most affected barangay is Rempes. No IDPs but 1,783 families were affected, with seven casualties.

CURRENT SITUATION

Affected families of Barangay Rempes stay in their homes, but their sources of livelihood are damaged. In addition, there is an impending hazard at the top of the mountain adjacent to the sitio where the IDPs reside. According to the IDPs, water continued to flow with mud from the top of the mountain. They expressed fear of massive erosion directly eroding the area where they are now staying.

PROTECTION ISSUES, RESPONSES, AND GAPS

THREAT TO LIFE, SAFETY, AND SECURITY

Protection assessment considers the various threats to life, safety, and security of displaced persons from crime, violence, armed conflict, or natural disaster.

ISSUES

There is still a risk of post-typhoon landslide, especially one of the Sitio Langkeb mountain spitting water.

RESPONSES

CFSI visited the area to assess the typhoon's damage to the residents of Barangay Rempes.

NEEDS/GAPS

Expand protection monitoring to assess the physical safety and security of the affected families.

ACCESS TO LIFELINES AND HUMANITARIAN ASSISTANCE	<i>Ensure that basic lifeline support is functional to facilitate the speedy delivery of responses</i>
ISSUES	
<ol style="list-style-type: none"> 1. There are more than 200 lost. These include cows, goats, pigs, and horses. 2. The Sitio affected is far-flung. IDPs walk an estimated 4 kilometers from the center of Barangay Rempes. 3. Humanitarian staff can only penetrate the adjacent Sitio due to an impassable road network going to the severely affected sitio. 	
RESPONSES	
Ongoing assessments	
NEEDS / GAPS	
<ol style="list-style-type: none"> 1. Support/humanitarian assistance for the affected families. 2. Follow-up Intensive damage assessment. 3. The BLGU must seriously assess the landslide areas and declare no return zone if the community is at risk of the hazards brought about by heavy rainfall. 	

ACCESS TO FOOD AID, NUTRITION & LIVELIHOOD	<i>Ensure that IDPs/Affected populations receive a minimum basic food ration</i>
ISSUES	
<ol style="list-style-type: none"> 1. Food insecurity, because of the far distance, food supply is a challenge in hauling going to the affected sitios. 2. Most livelihood sources (farms, fruits, vegetables, and animals) are damaged. 	
RESPONSES	
<ol style="list-style-type: none"> 1. Received only 200 food packs consisting of 3 kg rice, sardines, and coffee. 	
NEEDS/GAPS	
<ol style="list-style-type: none"> 1. Additional food packs for the families 2. An alternative source of livelihood 	

ACCESS TO NON-FOOD ITEMS	<i>Particular attention should be given to vulnerable persons needing core relief items.</i>
ISSUES	
<ol style="list-style-type: none"> 1. Damaged clothing for families 2. Damaged kitchen utensils 3. No light 4. School supplies of children are washed out by flood 	
RESPONSES	
<ol style="list-style-type: none"> 1. Used clothing provided by private entities thru the LGU 	
NEEDS / GAPS	
<ol style="list-style-type: none"> 5. Lighting materials 6. Provision of kitchen kits 7. Provision of school supplies for school children. 	

ACCESS TO WATER AND SANITATION	<i>Ensure sanitary facilities such as showers, toilets, and washing areas are in place</i>
---------------------------------------	--

ISSUES
1. Limited access to clean water, including drinking water
RESPONSES
1. None
NEEDS / GAPS
1. Drinking water supply

ACCESS TO SHELTER	<i>Meet the need for roofing and other materials from local sources if possible</i>
ISSUES	
1. Most of the houses are damaged	
RESPONSES	
1. None	
NEEDS / GAPS	
1. Provision of temporary shelter/shed/tarp	

HOUSING, LAND, AND PROPERTY	<i>Ensure that deprivation of land, homes, and other property of individuals as a result or cause of displacement must be properly monitored and addressed</i>
ISSUES	
1. Damaged houses have no immediate action from the concerned agencies.	
RESPONSES	
1. None	
NEEDS / GAPS	
1. BLGU to Immediately refer the issue to the concerned line agencies.	

ACCESS TO HEALTH	<i>Ensure that IDPs have access to primary health care and facilities during displacement</i>
ISSUES	
1. The populace started to have sickness (Coughs and Colds)	
RESPONSES	
1. None	
NEEDS / GAPS	
1. Medicines	
2. Hygiene kits	

SUPPORT TO PERSONS WITH SPECIFIC NEEDS	<i>Ensure that the specific needs of the most vulnerable members or groups of the displaced population are being targeted and addressed</i>
ISSUES	
1. None issue reported	
RESPONSES	
1. None	
NEEDS / GAPS	
Data of PSN	

CHILD PROTECTION AND PROTECTION AGAINST GENDER-BASED VIOLENCE	<ul style="list-style-type: none"> • <i>Ensure the safeguarding of displaced children from violence, exploitation, abuse, and neglect</i> • <i>IDPs are protected against violence based on their gender or sex, including acts that inflict physical, mental, or sexual harm or suffering, threats of such acts, coercion, and other arbitrary deprivation of liberty.</i>
ISSUES	
<ol style="list-style-type: none"> 1. Damaged school supplies, uniforms, and school materials for children 2. Proper hygiene for children 3. Classes were hampered. 	
RESPONSES	
1.	
NEEDS / GAPS	
<ol style="list-style-type: none"> 1. Provision of school supplies and slippers for children 2. Conduct of PSS for children and adolescence 3. Teachers to conduct Education in Emergency (EiE) 4. PSS activities must include PFA for parents, youth and the elderly, and PSN. 	

SOURCES OF INFORMATION

Brgy. Chair
 IDPs

PHOTO DOCUMENTATION

