

IDP PROTECTION ASSESSMENT REPORT (IDPPAR)

FLOODING IN DATU MONTAWAL MUNICIPALITY, MAGUINDANAO PROVINCE

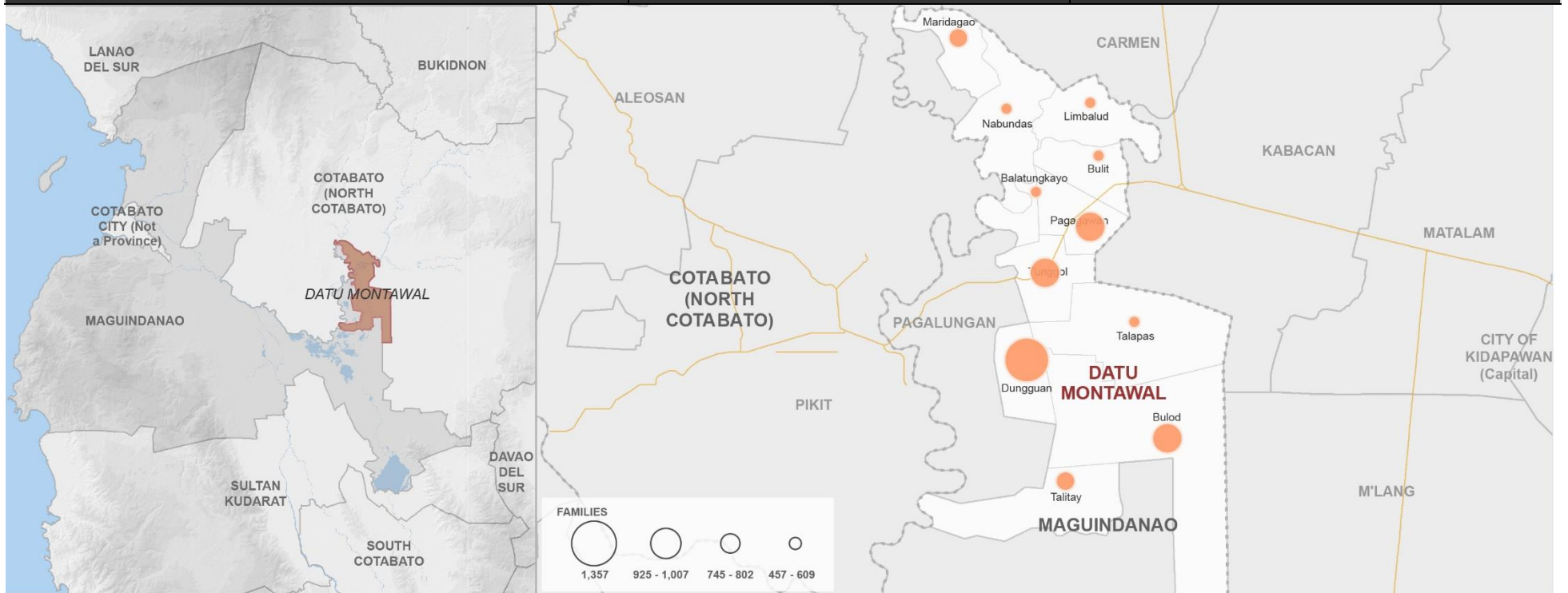


UNHCR exists to protect and assist everyone who has been affected by forced displacement in Mindanao. To coordinate assistance to IDPs, we use a cluster approach. UNHCR works closely with the government and Mindanao Humanitarian Team to identify needs of IDPs in areas of assistance, such as shelter, health care, shelter and protection. We assume a coordination and operational delivery role in IDP situations to ensure protection is central to our work in order to prevent further displacement.

IDPPAR no. 17, Issue no. 01, 2020 | 23 OCTOBER 2020

DATE OF DISPLACEMENT: 13/10/2020	TIME OF DISPLACEMENT: 9:30 PM	GPS COORDINATES (If available): <input type="text"/>
BARANGAY: Batungkay, Bulit, Bulod, Dungguan, Limbalod, Maridagao, Nabundas, Pagagawan, Talapas, Talitay, Tunggol	MUNICIPALITY: Datu Montawal	PROVINCE: Maguindanao
TYPE OF DISPLACEMENT: <input type="checkbox"/> NEW DISPLACEMENT <input type="checkbox"/> RECURRENT DISPLACEMENT Please refer to issue # <input type="text"/>		
REASON FOR DISPLACEMENT	<input checked="" type="checkbox"/> NATURAL DISASTER <input type="checkbox"/> ARMED CONFLICT <input type="checkbox"/> VIOLENCE PLEASE SPECIFY: Flooding brought by Typhoon Ofel	

IDPPAR No 17 | Update No 01 | Date of assessment: 23 October 2020



INCIDENT BACKGROUND

On 14 October 2020, a massive temporary evacuation happened in the Municipalities of Datu Montawal, Pagalungan, Pikit, Midsayap and Pigcawayan due to the intense flooding brought about by downpour. Due to the abrupt flooding, hundreds of houses in the Province of Cotabato were reportedly submerged in floodwaters.

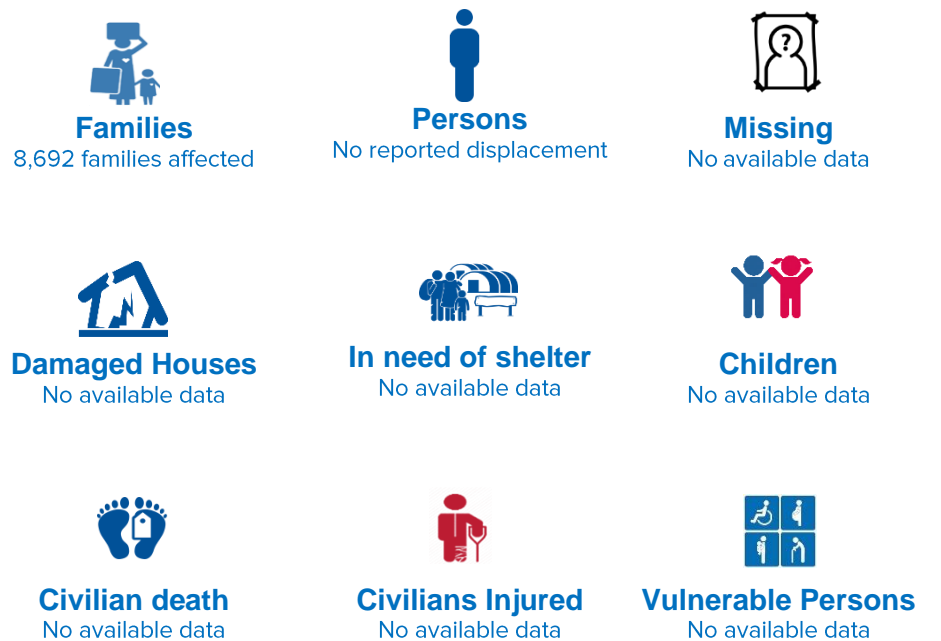
In Datu Montawal, the heavy flooding affected 11 barangays - Batungkay, Bulit, Bulod, Dungguan, Limbalod, Maridagao, Nabundas, Pagagawan, Talapas, Talitay, Tunggol - where most of the residents' houses were submerged in floodwaters.

CURRENT SITUATION

On 21 October 2020, CFSI conducted an actual assessment in the affected barangays of Datu Montawal, Maguindanao. Based on the information gathered, there were already 8,692 affected households within the 11 barangays of the municipality. Prior to the assessment, a quick meeting with MDRMO was conducted on some updates regarding the incident.

The affected community expressed their need for assistance on WASH, shelter, livelihood and food aid. They mentioned that the impact of flooding exacerbates their already poor living condition. Although there were assistance given by the LGU, affected families still expressed the need of a sustained assistance, especially on food, considering their current situation.

INCIDENT KEY FIGURES





PROTECTION ISSUES AND RESPONSE

I. THREAT TO LIFE, SAFETY AND SECURITY

Protection assessment considers the various threats to life, safety and security of displaced persons stemming from crime, violence, armed conflict or nature disaster

#	ISSUES	RESPONSE	IDENTIFIED NEEDS AND REMAINING GAPS
1.	Likelihood of another excessive flooding in the area is high given the current weather condition. Families living in low-lying areas are prone to flash floods due to sudden increase in water level.	LGU is keeping a constant communication and coordination with the affected barangays to provide support should the situation worsens and if there are families that needs to be evacuated.	Continue monitoring and dissemination of weather updates to affected barangay and families as part of prevention and response, and these shall serve as basis for their decision to return to their homes or to temporarily stay in their current locations.

II. SHELTER

Meet the need for roofing and other materials from local sources if possible

#	ISSUES	RESPONSE	IDENTIFIED NEEDS AND REMAINING GAPS
2.	Many families are not physically safe. They are temporarily staying in makeshift tents made of light materials such as used and dilapidated tarpaulins.		In need of tarpaulins, mosquito nets, blankets and mats for all affected households in the municipality.

III. FOOD AND NUTRITION

Ensure that IDPs receive a minimum basic food ration.

#	ISSUES	RESPONSE	IDENTIFIED NEEDS AND REMAINING GAPS
3.	Insufficient food assistance to affected families considering the number of days of flooding in the area. Shortage of food supply will greatly affect the nutritional condition of children, pregnant mothers, sickly people and elderly.	LGU provided food packs (25kg per family) to affected families of the municipality.	Assessment of the food and nutrition situation of affected families and initiate sustained provision of food aid based on the actual or assessed need per family.
4.	Absence of kitchen utensils to be used in cooking.		Provision of kitchen utensils per family.

IV. WASH

Ensure sanitary facilities such as showers, toilets and washing areas are in place.

#	ISSUES	RESPONSE	IDENTIFIED NEEDS AND REMAINING GAPS
5.	Latrines and washing facilities are totally submerged in water.	No identified responses provided yet.	Facilitate assistance in providing temporary latrines and other facilities available for IDPs and other affected families.
6.	No hygiene kits available for IDPs and all affected families.	No identified responses provided yet.	Provision of hygiene kits.
7.	Pumps and other sources of water were all submerged.	Provision of potable water per family by LGU.	Provision of additional water storage per family.

V. EDUCATION

Particular attention must be placed on the risks faced by adolescent girls, such as lack of access to education

#	ISSUES	RESPONSE	IDENTIFIED NEEDS AND REMAINING GAPS
8.	Distribution of modules were disrupted.	No identified responses provided yet.	Rescheduling of submission and distribution of modules. Determine and assess the actual situation of children and the status of their school supplies and learning modules.

VI. HLP (HOUSING, LAND AND PROPERTY)

Report any HLP related issues

#	ISSUES	RESPONSE	IDENTIFIED NEEDS AND REMAINING GAPS
9.	No identified information reported.	No identified information reported.	No identified information reported.



PROTECTION ISSUES AND RESPONSE

VII. HEALTH

Ensure that IDPs have access to health facilities.

#	ISSUES	RESPONSE	IDENTIFIED NEEDS AND REMAINING GAPS
10.	No identified information reported.	No identified information reported.	No identified information reported.

VIII. Vulnerable Persons

Particular attention should be given to persons with specific needs and vulnerable groups.

#	ISSUES	RESPONSE	IDENTIFIED NEEDS AND REMAINING GAPS
11.	No identified information reported.	No identified information reported.	No identified information reported.

IX. Core relief items (CRIs)

Particular attention should be given to vulnerable persons in need of core relief items

#	ISSUES	RESPONSE	IDENTIFIED NEEDS AND REMAINING GAPS
12.	No core relief items distributed.	No identified response provided yet.	Provision of plastic tarpaulins, mosquito nets, blankets, sleeping mats and hygiene kits and solar lamps.

PERSONS OF CONCERN (Breakdown by location)

Location (Origin)								Location (Current)				
No. of Fam	+/-	No. of Persons	+/-	Province	Mun	Barangay	Sitio	Province	Mun	Barangay	Sitio	Exact Location
578		2,890		Maguindanao	Datu Montawal	Batungkay	Tuka 1 & 2, Tumendeg, Dimagos	Maguindanao	Datu Montawal	Batungkayo	Kurungan	
457		2,285		Maguindanao	Datu Montawal	Bulit	Bai Tonina, Proper and Kabuling	Maguindanao	Datu Montawal	Bulit		Barangay Hall
1007		5,035		Maguindanao	Datu Montawal	Bulod	PAwa, Gas, Bialong, Kamasi, Proper, Bulisong, Tambunan, Ipol, Compra	Maguindanao	Datu Montawal	Bulod		Within same Barangay
1357		6,785		Maguindanao	Datu Montawal	Dungguan		Maguindanao	Datu Montawal	Dungguan		Within same barangay
475		2,374		Maguindanao	Datu Montawal	Limbalod	Punol, Menandal, Kakal, Lower Bangkiruhan, Upper Bangkiruhan, Tatas tangia	Maguindanao	Datu Montawal			(not yet identified)
745		3,725		Maguindanao	Datu Montawal	Maridagao	Ganta, Diallen, Proper, Tuka, Minanga	Maguindanao	Datu Montawal	Maridagao		Within same barangay
472		2,360		Maguindanao	Datu Montawal	Nabundas	Proper, Bulikay, Sambulawan, Tatas, Baybay	Maguindanao	Datu Montawal			
925		4,625		Maguindanao	Datu Montawal	Pagagawan	Punol, Ganap, Campo, Kurungan, Proper	Maguindanao	Datu Montawal			Datu Montawal covered court
609		3,045		Maguindanao	Datu Montawal	Talapas	Lesá, Kabuling, Proper Block, Inas, Talitay	Maguindanao	Datu Montawal			Multi-purpose building, Brgy. Talpas, Datu Montawal
802		4,010		Maguindanao	Datu Montawal	Talitay	Poper, Omar, Abubakar, Bader, Ali, Pidpulangian, Usman	Maguindanao	Datu Montawal			
995		4,975		Maguindanao	Datu Montawal	Tunggol	Poblacion, Landang, Pentol, Labu, Kulanguan					



NEEDS ANALYSIS	REMARKS
Protection	Likelihood of another excessive flash floods is very high, affecting families living in low-lying areas.
Food	In need of additional assistance to all affected families.
Shelter	Families living in makeshift tents are in dire need of tarpaulins for their physical safety.
WASH	Challenges in sanitation. Affected families are in need of WASH facilities and hygiene kits.
EDUCATION	Schooling of children are disrupted. Teachers are also not able to distribute learning modules on time because of the flooding.
HLP	
HEALTH	No reported cases of sickness during the assessment period, but there is a need to determine and assess further the actual situation of affected families and provide free medical check-ups.
CORE RELIEF ITEMS	No core relief items distributed.
GBV	
Child Protection	
Security	

KEY ADVOCACY MESSAGES

IDP ASSESSMENT REPORT

The IDP Protection Assessment Form aims to provide a starting point for information and analysis that can help humanitarian agencies, policy makers and other stakeholders concerning instances of forced displacement or solutions (repatriation, resettlement, integration). The number of people displaced/affected may differ from the number in need of humanitarian assistance. To the extent possible, the terminology used in the Dashboard reflects the *UN Guiding Principles on Internal Displacement* and other sources of international law and practice. The information reported in the IDP Protection Assessment Forms has been received from members of the Protection Cluster across Mindanao. Consequently, unreported cases of forced displacement and solutions are not reflected. Updates will be provided as and when more information is received from members. Although efforts are made to verify the data, the Protection Cluster takes no responsibility for the incompleteness or inaccuracy of the information. At the end of every month, this data is compiled and distributed through the '**Protection Dashboard**'. The information provided in this IDP Assessment Report does not necessarily reflect the views of UNHCR or any individual member of the Protection Cluster.

MINDANAO VIRTUAL PROTECTION COORDINATION PLATFORM (MVPCP)

In the present circumstances where no limited physical access to IDPs is possible, and humanitarian actors are adjusting response using alternative modalities to access people in need including relying on social media, phones and other online communication tools to maintain regular communication with protection monitors within IDP community, as well as host communities, Mindanao Virtual Protection Coordination Platform (MVPCP) will strengthen coordination among relevant actors with a protection role (from regional and provincial down to municipal and community level) in Mindanao

Under the leadership of Ministry of Social Services and Development (MSSD) and with full participation of key state agencies: DSWD, BARMM READI and IATF, members of MVPCP will work closely to ensure that COVID-19 related prevention and response initiatives at the national level include IDPs, while at the same time closely monitoring their application to ensure that IDPs have access to basic services. Members of the MVPCP will work closely to ensure timely prevention of and response to protection issues in Mindanao including BARMM region and facilitate timely information-sharing with the IDP community on health measures in response to COVID-19.

WORKING IN PARTNERSHIP

UNHCR works in partnership with government entities, INGOs, NGOs, CSOs, and UN Agencies, and other organizations. Its primary role is to share information on protection risks and needs and to facilitate coordinated intervention among the various actors involved in IDP protection. UNHCR has project partnership with CFSI, CHR, ACCORD, MMI, KI, TKI, ACTED and IRDT covering Mindanao island including BARMM region. In addition to its project partnership, UNHCR works closely with local authorities and Mindanao Humanitarian Actors including: UNICEF | IOM | OCHA | UNDP | UNFPA | UNHABITAT | WFP | WHO | OXFAM | ACTION AGAINST HUNGER | CARE | UNWOMEN | ICRC | SAVE THE CHILDREN | KFPDI | PRC

For more information, please visit the Protection Cluster website <http://www.protectioncluster.org/philippines/> or e-mail us at PHICOPRC@unhcr.org

2020



UNHCR MAIN OFFICE

6th Floor, GC Corporate Plaza, 150 Legaspi Street
Legaspi Village, 1229 Makati City, Philippines

UNHCR FIELD OFFICE (COTABATO)

local office address: 22 Ilang Ilang, Cor, Rosales St.
RH6, 9600 Cotabato City, Philippines

www.unhcr.org