


# IDP PROTECTION ASSESSMENT REPORT (IDPPAR)

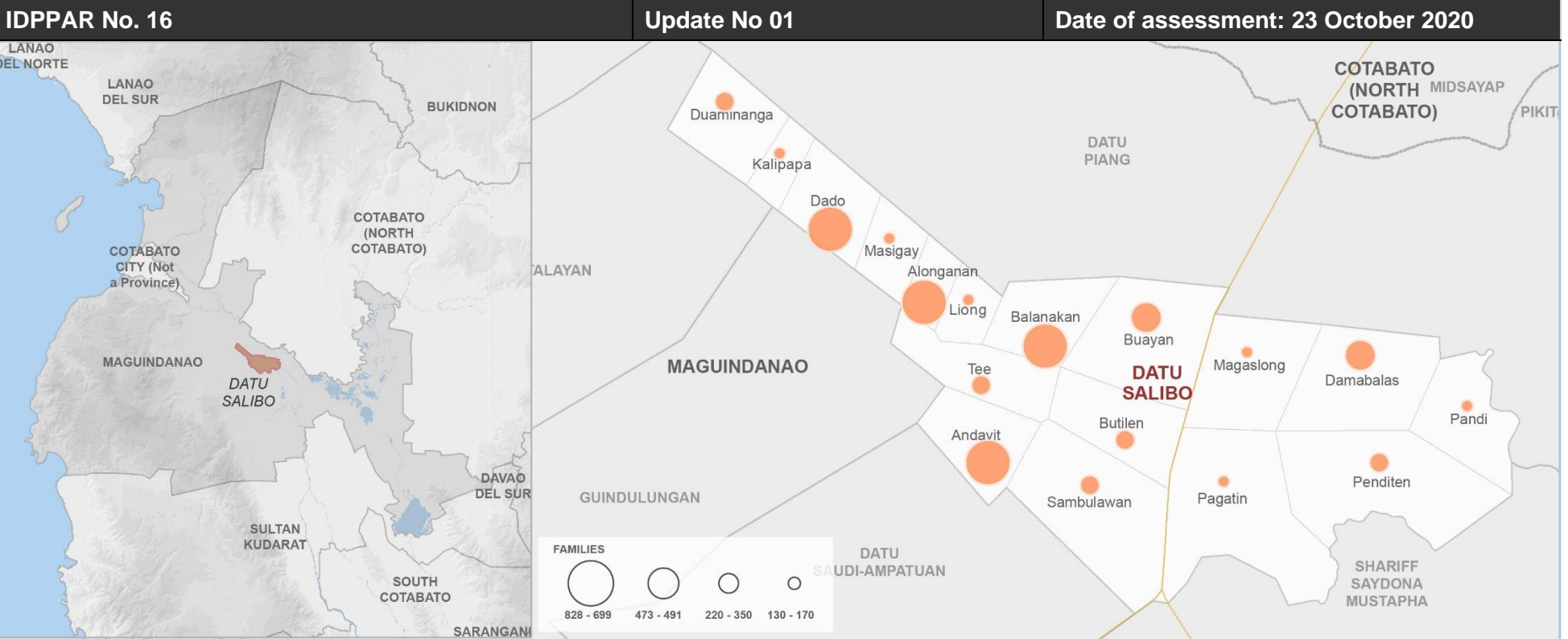
## FLOODING IN DATU SALIBO MUNICIPALITY, MAGUINDANAO PROVINCE DUE TO TYPHOON OFEL

 2  
0  
2  
0


 UNHCR exists to protect and assist everyone who has been affected by forced displacement in Mindanao. To coordinate assistance to IDPs, we use a cluster approach. UNHCR works closely with the government and Mindanao Humanitarian Team to identify needs of IDPs in areas of assistance, such as shelter, health care, shelter and protection. We assume a coordination and operational delivery role in IDP situations to ensure protection is central to our work in order to prevent further displacement.

**IDPPAR no. 16, Issue no. 01, 2020 | 23 OCTOBER 2020**

<b>DATE OF DISPLACEMENT:</b> 17/10/2020	<b>TIME OF DISPLACEMENT:</b> 9:00 PM	<b>GPS COORDINATES (if available):</b> <input type="text"/>
<b>BARANGAY:</b> Alonganen, Andavit, Balanakan, Buayan, Butilen, Dado, Damabalas, Duaminanga, Kalipapa, Liong, Magaslong, Masigay, Pagatin, Pandi, Penditen, Sambulawan, and Tee	<b>MUNICIPALITY:</b> Datu Salibo	<b>PROVINCE:</b> Maguindanao
<b>TYPE OF DISPLACEMENT:</b> <input type="checkbox"/> NEW DISPLACEMENT <input type="checkbox"/> RECURRENT DISPLACEMENT   Please refer to issue # <input type="text"/>		
<b>REASON FOR DISPLACEMENT</b>	<input checked="" type="checkbox"/> <b>NATURAL DISASTER</b> <input type="checkbox"/> <b>ARMED CONFLICT</b> <input type="checkbox"/> <b>VIOLENCE</b>	
	<b>PLEASE SPECIFY:</b> Heavy rains brought about by Typhoon Ofel	



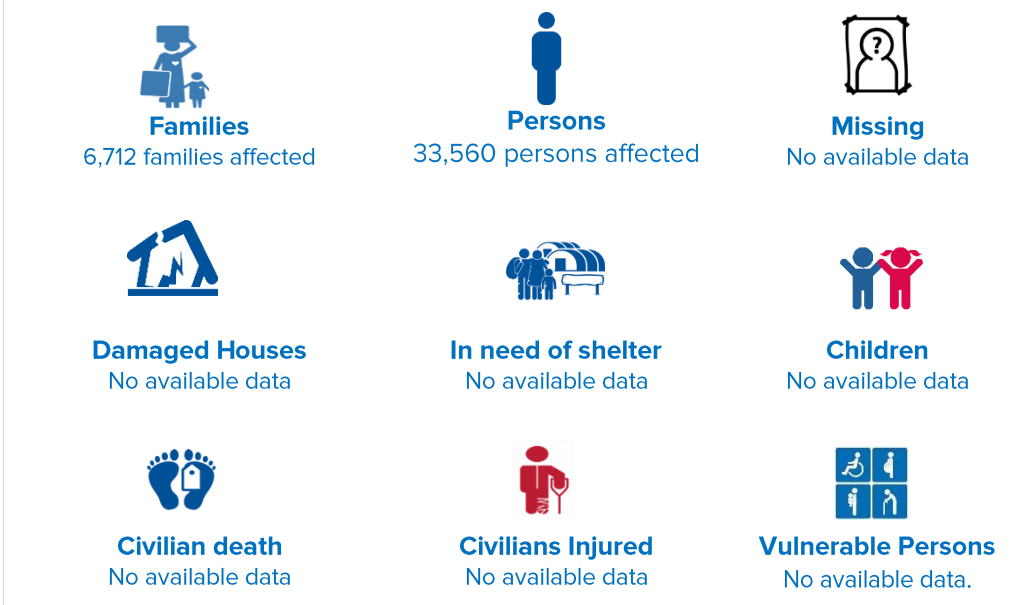
### INCIDENT BACKGROUND

On 17 October 2020, heavy rains brought about by Typhoon Ofel caused flooding in Datu Salibo affecting 17 barangays - Alonganen, Andavit, Balanakan, Buayan, Butilen, Dado, Damabalas, Duaminanga, Kalipapa, Liong, Magaslong, Masigay, Pagatin, Pandi, Penditen, Sambulawan, and Tee.

### CURRENT SITUATION

Community and Family Services Incorporated (CFSI) conducted actual assessment on 21 October 2020. According to MDRRMO of Datu Salibo, 6,712 families with a total of 33,560 individuals were affected by the flooding. Affected families whose houses were already submerged in water had decided to flee from their homes and had sought refuge in safer grounds. The rainfall already stopped during the assessment, but the water level continues to rise. The extent of the damage of the floods in the locality is still being determined by the LGU.

### INCIDENT KEY FIGURES





## PROTECTION ISSUES AND RESPONSE



Protection Cluster in Mindanao

### I. THREAT TO LIFE, SAFETY AND SECURITY

Protection assessment considers the various threats to life, safety and security of displaced persons stemming from crime, violence, armed conflict or nature disaster

#	ISSUES	RESPONSE	IDENTIFIED NEEDS AND REMAINING GAPS
1.	There is no massive displacement and majority of families just stayed in their habitual residences. However, should the water level continues to rise and remain its level for a longer period, affected families may live in an IDP-like situation without adequate food since their livelihood activities are hampered, no WASH facilities because their water sources and latrines are submerged. Flooding is recurrent because the location of the municipality is low-lying, and it is located near the Ligawasan Marsh.	No Identified response yet.	There is a need for support from Province and BARMM to determine the effective preparedness and prevention of flooding within the entire municipality.  Determine if there is a need for those families who may be affected by flash floods or sudden increase of water level, especially those living near the riverbanks, to pre-emptively evacuate.

### II. SHELTER

Meet the need for roofing and other materials from local sources if possible

#	ISSUES	RESPONSE	IDENTIFIED NEEDS AND REMAINING GAPS
1.	Undetermined number of houses are submerged in water and reportedly damaged by the strong water current.	No Identified response yet.	Identification and assessment of damaged houses to be considered in the planning. Moreover, provision of financial assistance and/or house repair materials are much needed by the affected families.

### III. FOOD AND NUTRITION

Ensure that IDPs receive a minimum basic food ration.

#	ISSUES	RESPONSE	IDENTIFIED NEEDS AND REMAINING GAPS
1.	No food relief has been provided yet. Stored food supply of affected families might not sustain their daily food need should the flooding continues.	The LGU is preparing for food pack distribution for the affected populations.	Additional food assistance to cater all IDPs and affected families in the affected barangays and evacuation sites.
2.	Farmlands and crops are damaged.	The LGU is coordinating with BARMM-MAFAR for the assessment of the extend of the damages of crops.	Need to determine the exact damages in crops and other sources of living as these are additional bases for intervention planning.

### IV. WASH

Ensure sanitary facilities such as showers, toilets and washing areas are in place.

#	ISSUES	RESPONSE	IDENTIFIED NEEDS AND REMAINING GAPS
1.	No available hygiene kits to be used.	No Identified response yet.	Provision of hygiene kits per family.
2.	Absence of handwashing facilities in most affected areas.	No Identified response yet.	Provision and construction of handwashing facilities.
3.	Concerns on the sources of potable/clean water.	No Identified response yet.	Provision of water storage per family and delivery of potable and clean water.

### V. EDUCATION

Particular attention must be placed on the risks faced by adolescent girls, such as lack of access to education

#	ISSUES	RESPONSE	IDENTIFIED NEEDS AND REMAINING GAPS
1.	Blended learning of children was affected.	No Identified response yet.	Provision school supplies needed in their blended learning.
2.	Schools submerged with water and facilities and school supplies damaged	No Identified response yet.	Assistance pertaining to the repair and replacement of damaged school facilities and supplies.

### VI. HLP (HOUSING, LAND AND PROPERTY)

Report any HLP related issues

#	ISSUES	RESPONSE	IDENTIFIED NEEDS AND REMAINING GAPS
1.	Houses are partially damaged and crops and fishing facilities are also destroyed.	No Identified response yet.	Financial assistance for the repair and replacement of the damage in shelter and livelihood was highly expressed by the interviewees.



## PROTECTION ISSUES AND RESPONSE

### VII. HEALTH

Ensure that IDPs have access to health facilities.

#	ISSUES	RESPONSE	IDENTIFIED NEEDS AND REMAINING GAPS
1.	Health facilities were submerged with floods.	No Identified response yet.	Need to provide health facilities and medicines.

### IX. Core relief items (CRIs)

Particular attention should be given to vulnerable persons in need of core relief items

#	ISSUES	RESPONSE	IDENTIFIED NEEDS AND REMAINING GAPS
1.	No CRIs have been provided yet.	No Identified response yet.	Provision of plastic tarpaulins, mosquito nets, blankets, sleeping mats and hygiene kits and solar lamps for those affected families in the remote areas.

### PERSONS OF CONCERN/ AFFECTED FAMILIES (Breakdown by location)

Location (Origin)								Location (Current)				
No. of Fam	+/-	No. of Persons	+/-	Province	Mun	Barangay	Sitio	Province	Mun	Barangay	Sitio	Exact Location
743		3,715		Maguindanao	Datu Salibo	Alonganan		Maguindanao	Datu Salibo	Alonganan		Alonganan
828		4,140		Maguindanao	Datu Salibo	Andavit		Maguindanao	Datu Salibo	Andavit		Andavit
760		3,800		Maguindanao	Datu Salibo	Balanakan		Maguindanao	Datu Salibo	Balanakan		Balanakan
473		2,365		Maguindanao	Datu Salibo	Buayan		Maguindanao	Datu Salibo	Buayan		Buayan
350		1,750		Maguindanao	Datu Salibo	Butilen		Maguindanao	Datu Salibo	Butilen		Butilen
669		3,345		Maguindanao	Datu Salibo	Dado		Maguindanao	Datu Salibo	Dado		Dado
491		2,455		Maguindanao	Datu Salibo	Damabalas		Maguindanao	Datu Salibo	Damabalas		Damabalas
312		1,560		Maguindanao	Datu Salibo	Duamin anga		Maguindanao	Datu Salibo	Duamin anga		Duamin anga
170		850		Maguindanao	Datu Salibo	Kalipapa		Maguindanao	Datu Salibo	Kalipapa		Kalipapa
136		680		Maguindanao	Datu Salibo	Liong		Maguindanao	Datu Salibo	Liong		Liong
132		660		Maguindanao	Datu Salibo	Magaslong		Maguindanao	Datu Salibo	Magaslong		Magaslong
150		750		Maguindanao	Datu Salibo	Masigay		Maguindanao	Datu Salibo	Masigay		Masigay
150		750		Maguindanao	Datu Salibo	Pagatin		Maguindanao	Datu Salibo	Pagatin		Pagatin
130		650		Maguindanao	Datu Salibo	Pandi		Maguindanao	Datu Salibo	Pandi		Pandi
220		1,100		Maguindanao	Datu Salibo	Penditen		Maguindanao	Datu Salibo	Penditen		Penditen
300		1,500		Maguindanao	Datu Salibo	Sambualawan		Maguindanao	Datu Salibo	Sambualawan		Sambualawan
320		1,600		Maguindanao	Datu Salibo	Tee		Maguindanao	Datu Salibo	Tee		Tee

NEEDS ANALYSIS	Remarks
<b>Protection</b>	Need to ensure that PWSN and other vulnerable individuals were given priority in terms of providing assistance.
<b>Food</b>	People affected expressed that food is their priority need.
<b>Shelter</b>	Several houses are submerged in flood and some are partially damaged.
<b>WASH</b>	WASH facilities and hygiene kits are highly needed, including clean water.
<b>EDUCATION</b>	There is a need to repair and replace damaged school facilities and supplies.
<b>HLP</b>	Financial assistance for some families whose houses are damaged.
<b>HEALTH</b>	Need to provide health facilities and medicines as many health facilities are submerged in water.
<b>CORE RELIEF ITEMS</b>	No core relief items were provided yet.
<b>GBV</b>	
<b>Child Protection</b>	
<b>Security</b>	

### KEY ADVOCACY MESSAGES

## IDP ASSESSMENT REPORT

The IDP Protection Assessment Form aims to provide a starting point for information and analysis that can help humanitarian agencies, policy makers and other stakeholders concerning instances of forced displacement or solutions (repatriation, resettlement, integration). The number of people displaced/affected may differ from the number in need of humanitarian assistance. To the extent possible, the terminology used in the Dashboard reflects the *UN Guiding Principles on Internal Displacement* and other sources of international law and practice. The information reported in the IDP Protection Assessment Forms has been received from members of the Protection Cluster across Mindanao. Consequently, unreported cases of forced displacement and solutions are not reflected. Updates will be provided as and when more information is received from members. Although efforts are made to verify the data, the Protection Cluster takes no responsibility for the incompleteness or inaccuracy of the information. At the end of every month, this data is compiled and distributed through the '**Protection Dashboard**'. The information provided in this IDP Assessment Report does not necessarily reflect the views of UNHCR or any individual member of the Protection Cluster.

## MINDANAO VIRTUAL PROTECTION COORDINATION PLATFORM (MVPCP)

In the present circumstances where no limited physical access to IDPs is possible, and humanitarian actors are adjusting response using alternative modalities to access people in need including relying on social media, phones and other online communication tools to maintain regular communication with protection monitors within IDP community, as well as host communities, Mindanao Virtual Protection Coordination Platform (MVPCP) will strengthen coordination among relevant actors with a protection role (from regional and provincial down to municipal and community level) in Mindanao

Under the leadership of Ministry of Social Services and Development (MSSD) and with full participation of key state agencies: DSWD, BARMM READI and IATF, members of MVPCP will work closely to ensure that COVID-19 related prevention and response initiatives at the national level include IDPs, while at the same time closely monitoring their application to ensure that IDPs have access to basic services. Members of the MVPCP will work closely to ensure timely prevention of and response to protection issues in Mindanao including BARMM region and facilitate timely information-sharing with the IDP community on health measures in response to COVID-19.

## WORKING IN PARTNERSHIP

UNHCR works in partnership with government entities, INGOs, NGOs, CSOs, and UN Agencies, and other organizations. Its primary role is to share information on protection risks and needs and to facilitate coordinated intervention among the various actors involved in IDP protection. UNHCR has project partnership with CFSI, CHR, ACCORD, MMI, KI, TKI, ACTED and IRDT covering Mindanao island including BARMM region. In addition to its project partnership, UNHCR works closely with local authorities and Mindanao Humanitarian Actors, including: UNICEF | IOM | OCHA | UNDP | UNFPA | UNHABITAT | WFP | WHO | OXFAM | ACTION AGAINST HUNGER | CARE | UNWOMEN | ICRC | SAVE THE CHILDREN | KFPDI | PRC

For more information, please visit the Protection Cluster website <http://www.protectioncluster.org/philippines/> or e-mail us at [PHICOPRC@unhcr.org](mailto:PHICOPRC@unhcr.org)

# 2020



### UNHCR MAIN OFFICE

6th Floor, GC Corporate Plaza, 150 Legaspi Street  
Legaspi Village, 1229 Makati City, Philippines

### UNHCR FIELD OFFICE (COTABATO)

local office address: 22 Ilang Ilang, Cor, Rosales St.  
RH6, 9600 Cotabato City, Philippines

[www.unhcr.org](http://www.unhcr.org)